

### Advantages at a glance

#### Improved Efficiency

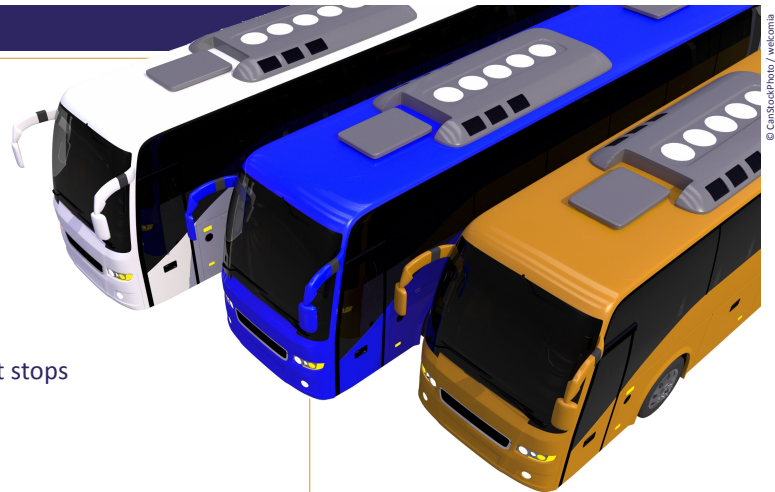
- Better co-ordination/disposition
- Simplified and unified vehicle management
- Simplified cooperation between management and maintenance/workshop

#### Improved Quality

- Document premature or delayed departures
- Defence against suits from early/late arrivals at stops

#### Reduced Costs

- Fuel consumption per bus and per driver
- Detection of standstill with running engine
- Realisation of fuel consumption-based remuneration (bonus system)
- Identification of drivers with training needs



© CanStockPhoto / wikimedia

### Complete solution for unique needs

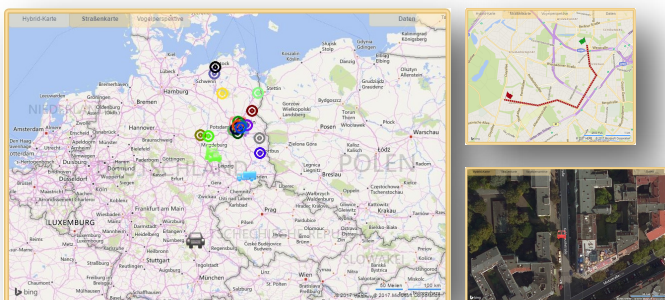
**TSI Fleetmanager** is one of the most advanced fleet management solutions available today, which opens up new possibilities and advantages especially for bus operators and businesses in the passenger transport sector.

With many features especially optimized for buses, you not only create new, previously unseen levels of **transparency** in your processes, thereby increasing your **quality**, but also gain immense **efficiency** increases in your day-to-day operations, permitting quicker and more targeted responses in critical situations.

In addition, the system monitors in detail your **fuel con-**

**sumption per driver** also across several vehicles. Thereby you can not only create an incentive system rewarding fuel efficient, **economical driving behaviour**, but also immediately recognize where training measures may be needed. Detailed reports and a precise **driving style analysis** will help you to plan, implement and measure your training.

Naturally, the **TSI Fleetmanager** scales with your growth starting from the first vehicle and integrates seamlessly into your existing infrastructure and enterprise resource planning (ERP) strategy.

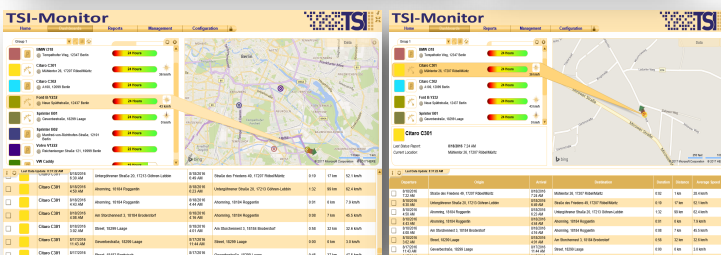


#### Live GPS Tracking

- Live positioning of your vehicles
- Complete routes recorded automatically
- Driver recognition and driving style analysis
- Tour optimisation
- Automatic recording of fuel consumption
- Fast and accurate billing
- Traceability and data archiving

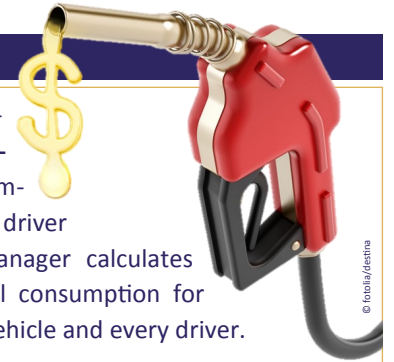
#### Live Disposition

- Interactive Dashboard
  - All vehicles directly in view
  - Display of current traffic
- Real-Time data visualisation
  - Up-to-the-minute map display of all vehicles
  - Integrated direction and speed display
- Brief overview of the last trips



# TSI Fleetmanager

## Intelligent fleet management for your success



### Tracking of fuel consumption

#### Vehicle type independent

- Using CAN/FMS-Bus Connection
- Using flow rate sensors

#### Analyses per Driver & per Vehicle

#### Comparability

- Vehicles with each other (detection of possible technical defects)
- Drivers with each other (detection of training needs)

#### Fuel consumption goals

- Per vehicle, seasonal
- Automatic evaluation according to goal performance (in percent/traffic lights)

With our vehicle type-independent **fuel consumption tracking** combined with automatic driver recognition, TSI Fleetmanager calculates precisely the actual fuel consumption for every single trip, every vehicle and every driver.

This creates instant **comparability** based on precise, quantifiable measures and allow you to recognize immediate **saving potentials** or need for action.

The integrated seasonal and vehicle-dependent targets give you an instant overview of **goal achievements** or serve as the basis for an incentive-based remuneration for your drivers.

10-15%  
savings in fuel consumption

### Sample Calculation

#### Engine running while parked

Daily reduction	60 Minutes
Avg. fuel consumption (standstill)	0.5 gallons/hour
Savings	0.5 gallons

#### 10% fuel savings through more economical driving

Avg. fuel consumption	9.5 mpg
Avg. daily distance	200 miles
Daily fuel use	21 gallons
Savings (10%)	2.1 gallons

#### Total

Savings per day	2.6 gallons/day
Savings per month	78 gallons/month

For 10 buses/month	780 gallons
--------------------	-------------

### Reducing engine runtimes

With **TSI Fleetmanager**, you not only reduce fuel costs while driving, but also reduce times engines run unnecessarily while vehicles are parked.

Flexible options and reports enable targeted analyses and precise detection and monitoring, as well as success evaluation of your actions.

#### Automatic recording of engine runtimes

- During standstill
- Configurable threshold periods
- Assignable to responsible drivers

#### Drivers spending breaks inside vehicle

- Despite available, climatized break rooms

#### Reduction of environmental footprint

- Strong reduction of CO2 emissions

### More features at a glance

TSI Fleetmanager is based on our **multi-functional** application and Web **platform**, which allows for versatility and customization with its **unique flexibility**, but also handles complex and special cases with ease.

TSI Fleetmanager supports all common formats such as **Excel, PDF, HTML** or **CSV** for data export. Furthermore, interfaces to your internal ERP systems can be activated—for easy further processing of the data.

Necessary reports can not only be designed and arranged

freely, but can also be delivered automatically e.g. to your email inbox at pre-defined times and intervals.

And with our mobile app you also have access to your data at anytime from the go or can collect additional information in the field.

## One Platform — Many Solutions